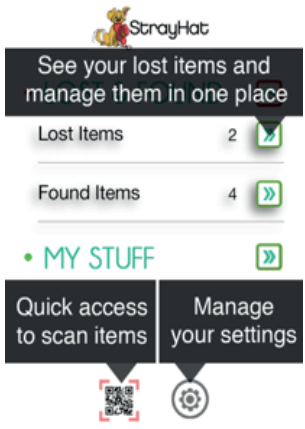


Home Page

The Home Page provides a summary of:

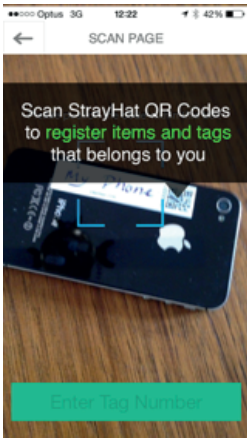
- 🐱 Items Lost - number of items currently missing.
- 🐱 Items Found - number of items that have been found.
- 🐱 Scan Button - use this to scan your items.
- 🐱 Manage settings.



Scanning a Label/Tag

By pressing the QR Code Icon, you will launch the StrayHat scanner. It reads the QR Code on the label, and three things can occur:

- 🐱 You find your own lost item; or
- 🐱 you scan the QR Code for the first time - the system will prompt you to update the item details as outlined in Item List.; or
- 🐱 You find someone else's label - notifying them that the item has been found and where it is.



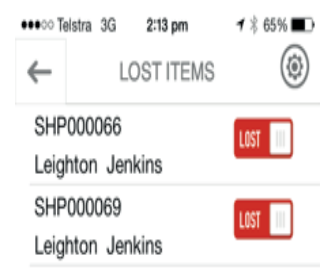
The system takes care of the updating LOST/GOOD status.

If the QR Code is damaged, just type in the Code number e.g SH00009.

Lost Items

Lost items will be shown with a RED bar. LOST means:

- 🐱 You marked the item lost.
- 🐱 The Item has been found but not yet collected.

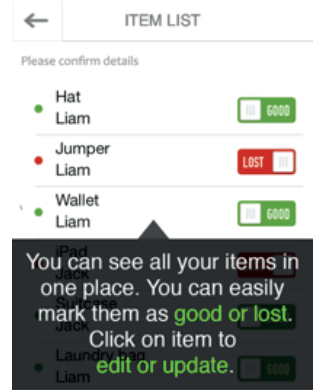


Item List

The Item List gives you a complete view of all your items in one place.

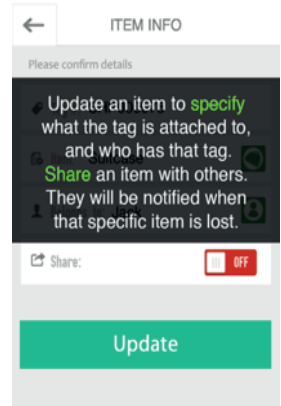
Each item has a unique number.

“Belongs To” refers to the name of the child, and the item to which you attach it to. e.g. water bottle.



When you order named labels, the “Belongs To” field will be automatically filled. The Share button is a means of notifying someone that a specific item has been lost e.g. you can add your music tutor's email to a violin.

NB. Share is for one specific item. See My Account.

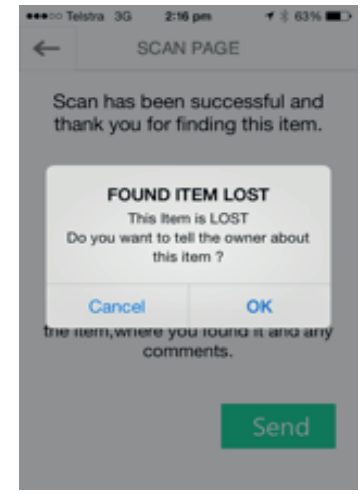


Finding Lost Items

StrayHat is a community that collaborates to find lost property, especially at School. In a few seconds you can help.

Scan the lost tag. StrayHat will capture:

- 🐱 The Tag/Label number from the QR Code
- 🐱 Time and Location
- 🐱 Any alternative message you wish to leave.



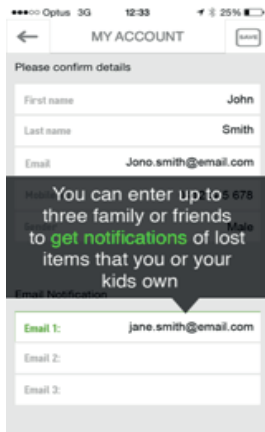
Tips on Scanning Items that are Found

Here are some guidelines on scanning items which you have found.

- 🐱 Scan the item close to where you intend to leave it e.g. near a lost property bin.
- 🐱 The system is anonymous for everyone's privacy. Don't feel obliged to share your information.
- 🐱 School bodies such as the P&C may want to have a clean up drive.
- 🐱 The more users looking for items, the more likely yours will be found.

My Account

Here is where you can manage your account. All your details are kept here.



Notification emails.

These are the emails we send you when an lost item has been found.

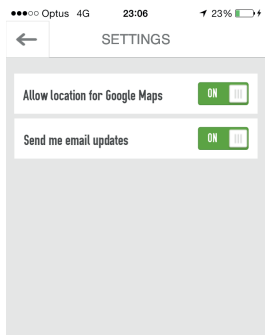
We allow up to three additional email addresses to be added (a total of four).

This feature has been designed to help recovery of items by anyone who regularly goes to the school to collect the child.

This feature works exactly the same as the Share feature but applies at all your items.

Change Settings

The “Change Setting” option offers additional features that will be available in the future.



‘This screen covers a few additional features that will be available in the future.

‘Allow Location for Google Maps’ - This is an important feature to have selected as ‘ON’ so that when you find a lost item, the StrayHat application merges the Tag ID with your location.

‘Send Email Updates’ - selecting this option will mean that your will be informed of new and improved software versions.

StrayHat



Take control of your School Items

Save Money

Save Time

Reduce Stress

StrayHat
P.O.Box 609, ROSEVILLE, NSW, 2069
Phone: 1300 423 661

www.strayhat.com

User's Guide to StrayHat